

Text Engineering: Graphic Organizer

Overview

[Text engineering](#) is a strategy that embeds scaffolds and supports directly into grade-level text increase student comprehension. This strategy is part of Colorin Colorado's [ELL Strategy Library](#).

Types of Scaffolds

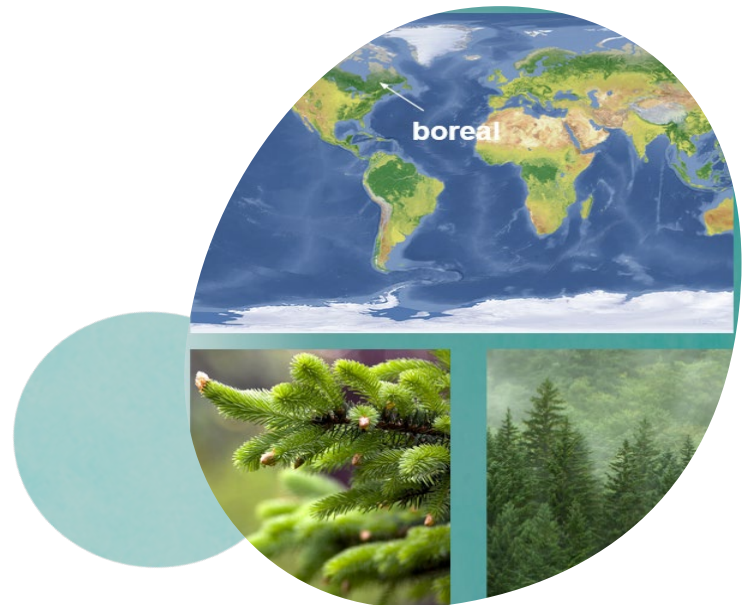
- Chunks of text
- Headers
- Visuals
- Cognates & translated terms
- Student-friendly definitions
- Synonyms



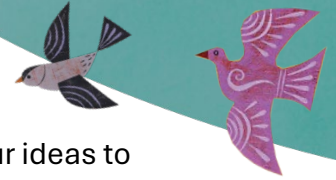
Sample: What are boreal forests?

Northern boreal (*boreal*) forests stretch down from the Arctic (*El Ártico*) and are dominated (*dominado*) by evergreen trees (*los árboles de hoja perenne*) – conifers (*coníferas*) that mostly keep their deep (dark) green leaves, called needles, year-round (all year long).

- Cognates
- Translations
- Student-friendly definitions
- Synonyms



Practice Text



How would you engineer this text? Make notes in the chart below and then add your ideas to the text.

These types of forest are more dominated by spruce and fir trees and include other conifers such as cedar trees, hemlocks, pine trees, and cypress trees.

Headers	Visuals	Cognates/ Translations	Definitions	Synonyms

These types of forest are more dominated by spruce and fir trees

and include other conifers

such as cedar trees, hemlocks, pine trees, and cypress trees.

Text Engineering: Graphic Organizer



Use this template to engineer your own text.

Your text

Headers	Visuals	Cognates/ Translations	Definitions	Synonyms